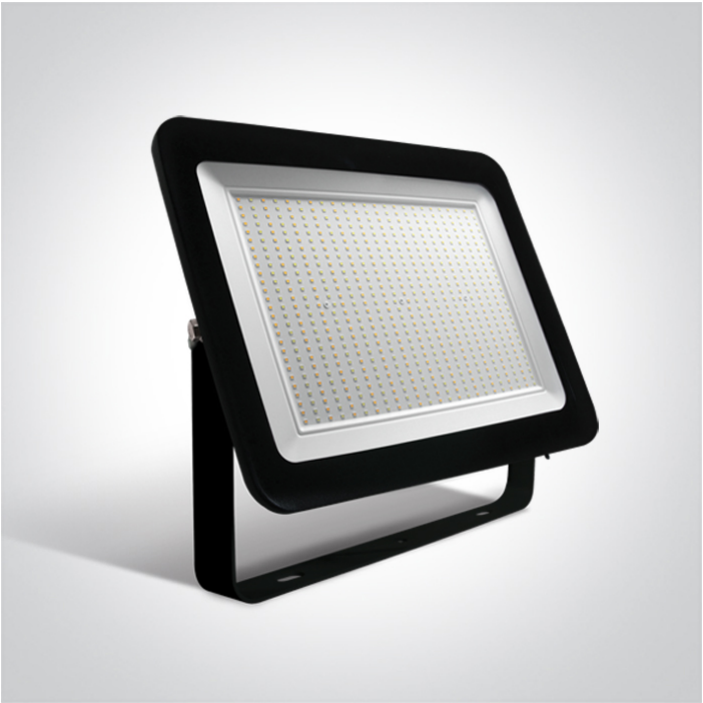




New 2025 Edition 3>Industrial & Floodlights

7028CH/B/V



300W DOB LED CCT Variable floodlight with adjustable mounting bracket.

IP65 rated for outdoor use.

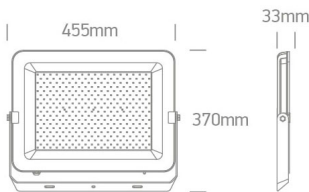
Complies with standard EN60598-1 and any other specific standards.



Downloads



Dimensions



Physical Specification



|                   |                          |
|-------------------|--------------------------|
| Item Group        | New 2025 Edition 3       |
| Family            | Industrial & Floodlights |
| Order Code        | 7028CH/B/V               |
| Colour            | Black                    |
| Material          | Aluminium                |
| Diffuser Material | Glass                    |
| Shape             | Rectangular              |
| Length            | 455mm                    |
| Width             | 370mm                    |
| Height            | 33mm                     |
| Surface Ceiling   | Yes                      |
| Surface Wall      | Yes                      |

|                      |
|----------------------|
| Surface Floor/Ground |
| Outdoor              |
| Adjustable           |
| IK Rating            |

|             |
|-------------|
| Yes         |
| Yes         |
| 1 Direction |
| 6           |

Electrical Characteristics

|                  |
|------------------|
| Gear             |
| Fitting + Driver |
| Input Voltage    |
| 50 Hz            |
| 60 Hz            |
| Safety Class     |
| Power(Watts)     |
| IP Rating        |
| Light Source     |
| Dimmable         |
| Cable Length     |
| F Mark           |

|   |
|---|
| Built In  |
| 220-240V  |
| Yes   |
| Yes   |
|  |
| 300W  |
| IP65  |
| LED built in  |
| No  |
| 50cm  |
|  |

|              |
|--------------|
| Fitting      |
| Light Source |
| LED Type     |

|              |
|--------------|
| LED built in |
| SMD          |

|               |
|---------------|
| Gear          |
| Gear Type     |
| Input Voltage |
| Dimmable      |

|            |
|------------|
| Led Driver |
| 220-240V   |
| No         |

Illumination Data

|                      |
|----------------------|
| Colour Temperature   |
| Lumen Output         |
| Light Efficiency     |
| CRI                  |
| Beam Angle           |
| Illumination Diagram |

3000K-4000K-6500K

30000lm

100lm/W

80

110°



Packing Info

Certification & Warranty

|                  |
|------------------|
| Warranty         |
| Average Lifetime |
| Weee Directive   |

2 Years

36000Hrs L70B50

Yes

switch to  
one light!

one  
LIGHT

