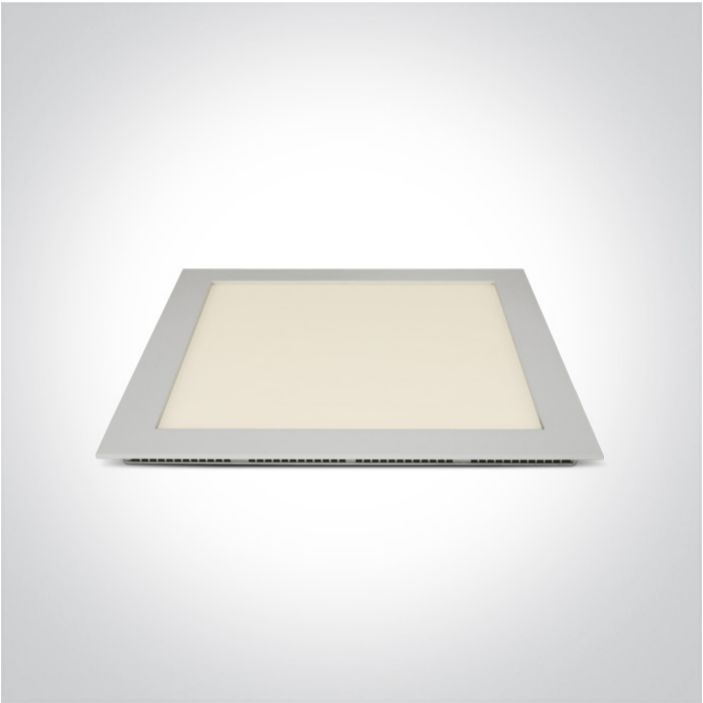




05 Downlights Fixed>The 16-30W Square Recessed Panels Aluminium

50130FA/W/V



CCT Variable 30W slim downlight LED, IP20, ideal for commercial applications such as offices, galleries and showrooms.

Supplied with 800mA non-dimmable LED driver.

Complies with standard EN60598-1 and any other specific standards.



Downloads



Dimensions



Gallery






Physical Specification

Item Group	05 Downlights Fixed
Family	The 16-30W Square Recessed Panels Aluminium
Order Code	50130FA/W/V
Colour	White
Material	Die Cast
Diffuser Material	Acrylic
Shape	Rectangular

Length	300mm
Width	300mm
Height	22mm
Cutout Hole Width	280mm
Cutout Hole Length	280mm
Recessed Ceiling	Yes
Depth Required	50mm
Indoor	Yes
Adjustable	No

Electrical Characteristics

Gear	External-Included
Fitting + Driver	
Input Voltage	220-240V
50 Hz	Yes
60 Hz	Yes
Safety Class	
Power(Watts)	30W
IP Rating	IP20
Light Source	LED built in
Dimmable	No
F Mark	


Fitting	
Input Type	Constant Current
Input Current	800mA
Safety Class	
IP Rating	IP20
Light Source	LED built in
LED Type	SMD 2835

LED Brand
LED Number

Epistar
240


Gear

Gear Type
Input Voltage
50 Hz
60 Hz
Power(Watts)
Constant Current
800mA
IP Rating
Safety Class
Dimmable
Ambient Temp
Operating Temp
Housing Material
Brand

Led Driver
220-240V
Yes
Yes
20-32W
Yes
25-40
IP20

No
50°C
75°C
Plastic
Lifud

Illumination Data

Colour Temperature
Lumen Output
Light Efficiency
CRI
Beam Angle
Illumination Diagram

3000K-4000K-5700K
3000lm
100lm/W
80
120°


Packing Info

Box Weight
Pcs/Carton

1.133kg
12

Barcode	5291889078999
HS Code	9405119090

Certification & Warranty

Warranty	3 years
Weee Directive	Yes

switch to
one light!

