

02 Recessed Spots Fixed LED>The IP65 Mini Range

10102H/B/W



2W COB LED recessed spot IP65.

Requires 700mA driver. Driver cannot pass through the cut-out hole.

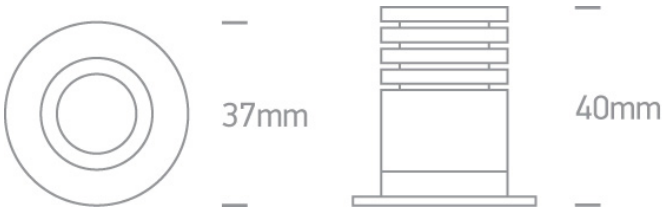
Complies with standard EN60598-1 and any other specific standards.



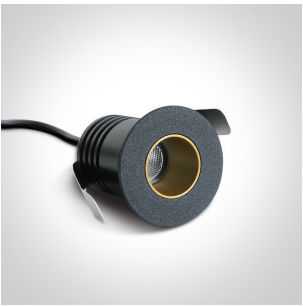
Downloads



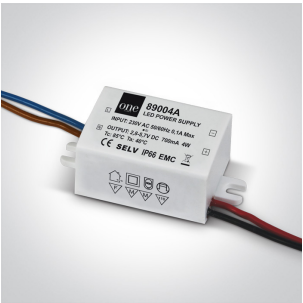
Dimensions



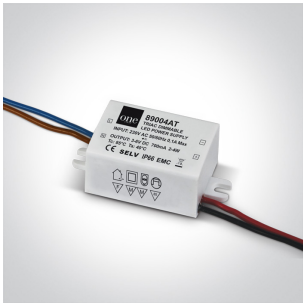
Gallery



Must be ordered separately



89004A





89004AT

Physical Specification

Item Group	02 Recessed Spots Fixed LED
Family	The IP65 Mini Range
Order Code	10102H/B/W
Colour	Black
Material	Aluminium
Shape	Circular
Height	30mm
Diameter	40mm
Cutout Hole Diameter	30mm
Recessed Ceiling	Yes
Depth Required	50mm
Indoor	Yes
Outdoor	Yes
Adjustable	No

Electrical Characteristics

Fitting	
Input Type	Constant Current
Input Current	700mA
Safety Class	
Power(Watts)	2W
IP Rating	IP65
Light Source	LED built in
LED Type	COB
LED Brand	Lumileds
LED Number	1
Cable Length	100cm
F Mark	

Illumination Data

Colour Temperature	3000K
Lumen Output	100lm
Light Efficiency	50lm/W
CRI	85
Beam Angle	30°
Illumination Diagram	
Dark Light	Yes

Packing Info

Box Length	6,5cm
Box Width	6,5cm
Box Height	4,5cm
Box Weight	0.097kg
Pcs/Carton	100
Barcode	5291889055235
HS Code	9405413990

Certification & Warranty

Warranty	5 years
----------	---------

switch to
one light!

one
LIGHT

